



### 23 Pacific Street Caringbah South NSW

4 1 3

Central position in a highly sought after pocket of Caringbah South, this single level brick veneer home offers the perfect opportunity for developers or homeowners to rebuild, renovate or develop STCA.

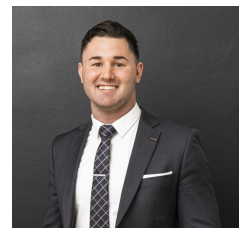
- Single level brick veneer home
- 4 generous sized bedrooms
- Bathroom with separate bath & shower
- Tandem lock up garage, plus studio
- Approximate Land Size: 681sqm, 15.24 Meter Frontage
- Zoned R2 Low Density Residential
- Potential Dual Occupancy Site (STCA)

**Type** : House

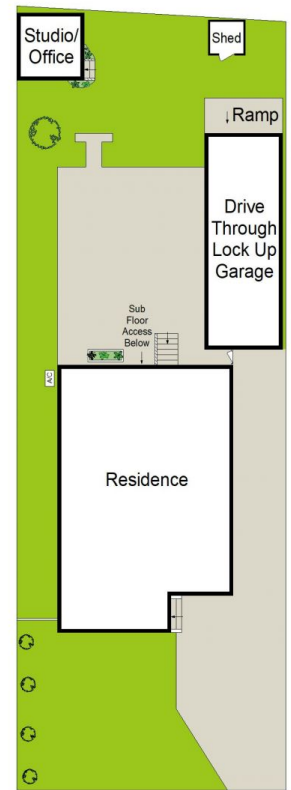
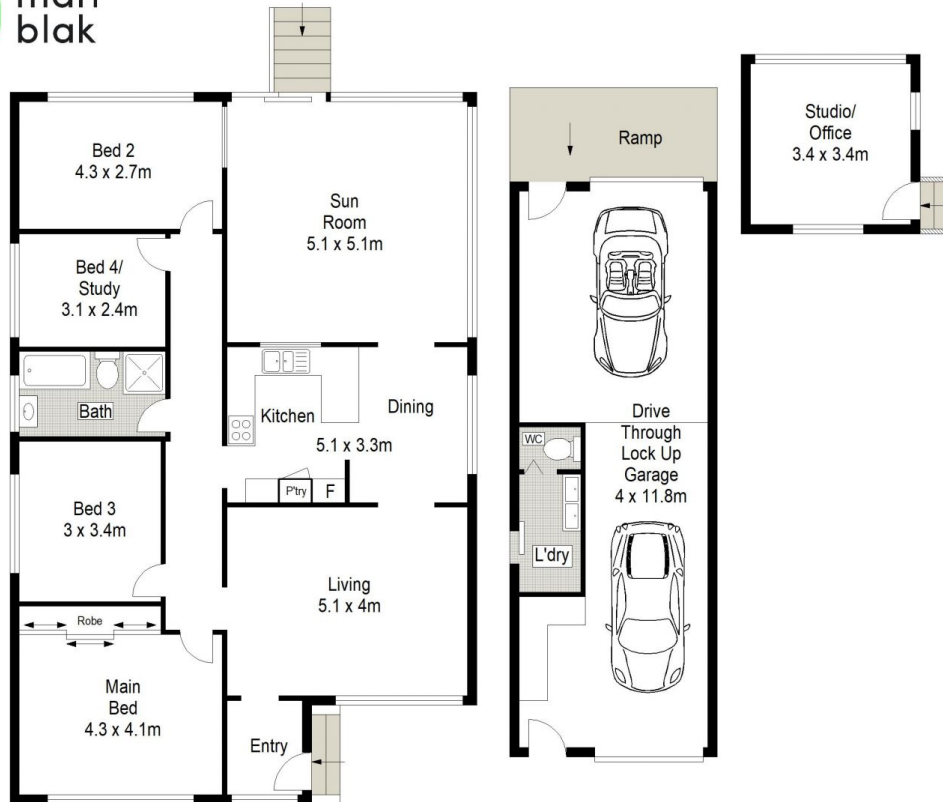
**View** : <https://www.mattblakproperty.com.au/7144832>



**Matthew Johnston**  
9529 3433



**Billy Burke**  
9529 3433



**SITE PLAN (NOT TO SCALE)**



0 1 2 3 4 5 METRES

**23 Pacific Street, Caringbah South**

4 1.5 2

Scale in metres. Indicative only. Dimensions are approximate. All information contained herein is gathered from sources we believe to be reliable. However we cannot guarantee its accuracy and interested persons should rely on their own enquiries.

